

The tragedy of SKDC's Site Allocations Policy

Stamford Chamber of Trade and Commerce is opposed to the recent SKDC Cabinet decision to confirm the allocation of land between Empingham and Tinwell Road for future development.

One of the Reports relied on for guidance by SKDC is the 2011 Jacobs Traffic Study. It seems that the authors of this report did not grasp that development on the West means travel through the congested centre to get the education, medical and supermarket services on the East.

The Jacobs Study suggests that by 2026, delays during the morning peak period on the Town Bridge will have increased by 57%. The evening peak period delays will increase by 66%. The average delays across the 5 signalled junctions during the morning peak period will increase by 45%. This huge increase in delays results from normal traffic growth caused by increasing car ownership and by new development.

In 1995 JMP Consultants produced for our Chamber their Report on Traffic & Highways. JMP suggested gridlock could occur by 2014 and concluded that an Eastern Relief Road would be beneficial to ensure that our Stamford highway network functions satisfactorily.

So both the 2011 Jacobs Traffic Study and the 2005 JMP Report point to one thing. With just normal traffic growth, Stamford's traffic will soon be gridlocked.

Yet SKDC have pushed forward with proposals

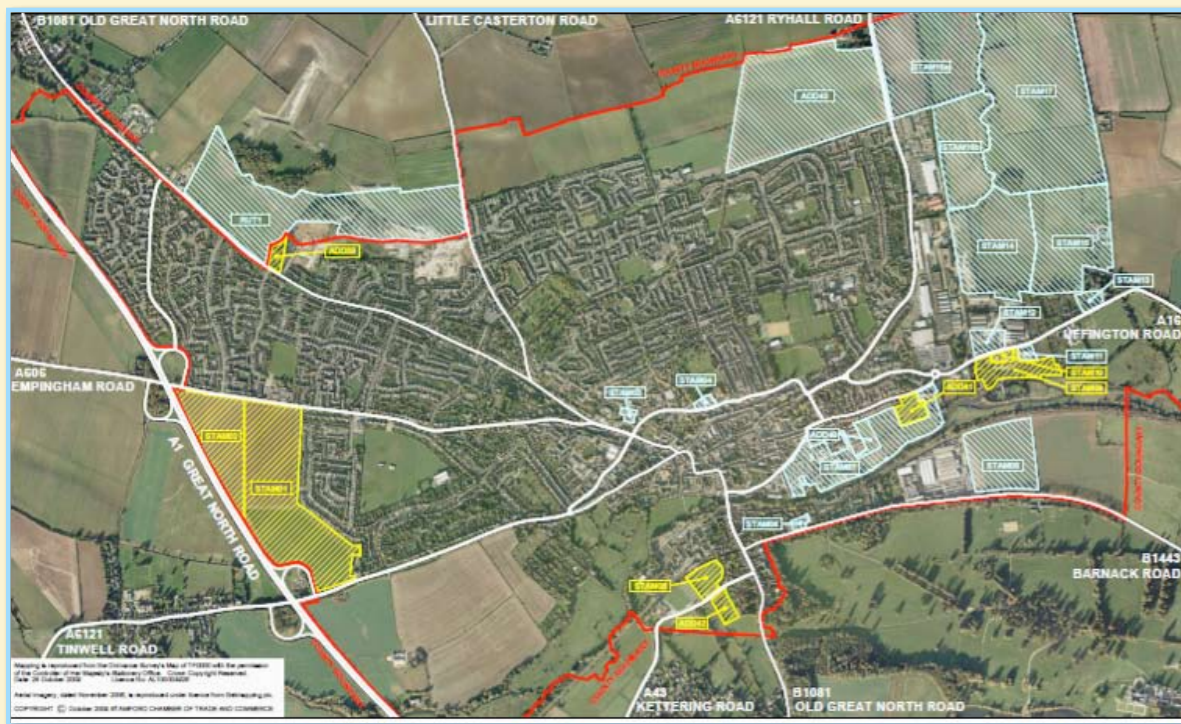
to add developments large and small to Stamford's already overloaded traffic network, including building on our green belts.

In 2006, 2009 and 2010 our Chamber proposed to SKDC the development of lands in close proximity to the proposed Relief Road, in order to fund the building of the road through a strategic infrastructure tariff. This was in line with the 1995 Local Plan which put development to the East, leaving a green belt between the West of Stamford and the A1.

In the 1995 SKDC Local Plan, the development lands on the East proposed by our Chamber were not environmentally protected. The Empingham and Tinwell Road lands on the West were double designated for environmental protection, i.e. Green Belt.

The new SKDC policy reverses all the 1995 environmental protections, wrongfully removing protection from the Western green belt, imposing new protection on the East. This decision was guided by a Landscape Sensitivity and Capacity Report that is clearly flawed.

The proposed Site Allocations Policy is not home and dry. It now goes for public consultation, then everything goes to the Minister in Whitehall and then to an Independent Examination. Our Chamber will continue to oppose the Policy with detailed arguments during these next stages.



Yellow shaded areas have been approved for development - all others have been rejected

Lincolnshire County Council's Parking Policy

We recently consulted with our membership on LCC's proposed policy and are awaiting members' feedback as we go to print. For some years now, it has been possible for visitors, residents and workers in Stamford to park almost anywhere on-street (or in a free off-street car park), at little risk of any penalty for either over-staying in time-limited spaces or for parking on yellow lines. Only the fee-paying SKDC-run off street car parks are supervised by wardens. Elsewhere it's a free-for-all!



St. Paul's Street on a Wednesday

With the introduction of CPE (Civilian Parking Enforcement) all this will change – the warden(s) will be back, this time covering the whole town, as was the case up until a few years ago. We are sure that the new regime will be greeted with mixed feelings.

The majority of retail outlets will regard it as a good thing as it will liberate town centre free parking spaces to be rotated every hour or two, as was the original intention, providing better provision for shoppers who wish to visit our town.

The majority of residents will probably be supportive, since there are also plans to introduce residents' parking schemes in roads where non-residents are taking up spaces during the day. However, there will doubtless be some residents who are not so happy, as they have been using free limited-time spaces to park

outside or near their homes, at no cost.

Finally, there will be mixed views amongst people who work in Stamford, at least those who live outside the town, as they will likely be facing an additional cost for long-term parking, a burden they may have been avoiding up to now by using limited-time free spaces or parking in residential streets. No doubt some will decide to walk to work, some may switch to bicycles or mopeds and others might organise themselves to car-share – all excellent outcomes from an environmental perspective, but understandably unpopular amongst those affected. One suggestion is that any surplus revenue from Residents' Parking Schemes should be directed towards subsidising parking season tickets, so cushioning the blow somewhat for people who work in Stamford but live elsewhere.

More new members join the Chamber

Since the last newsletter, we welcome 6 new members:

North's Shoes: jamesnorth@northshoes.co.uk

Stamford Cheese Cellar:

stamfordcheesecellar@hotmail.co.uk

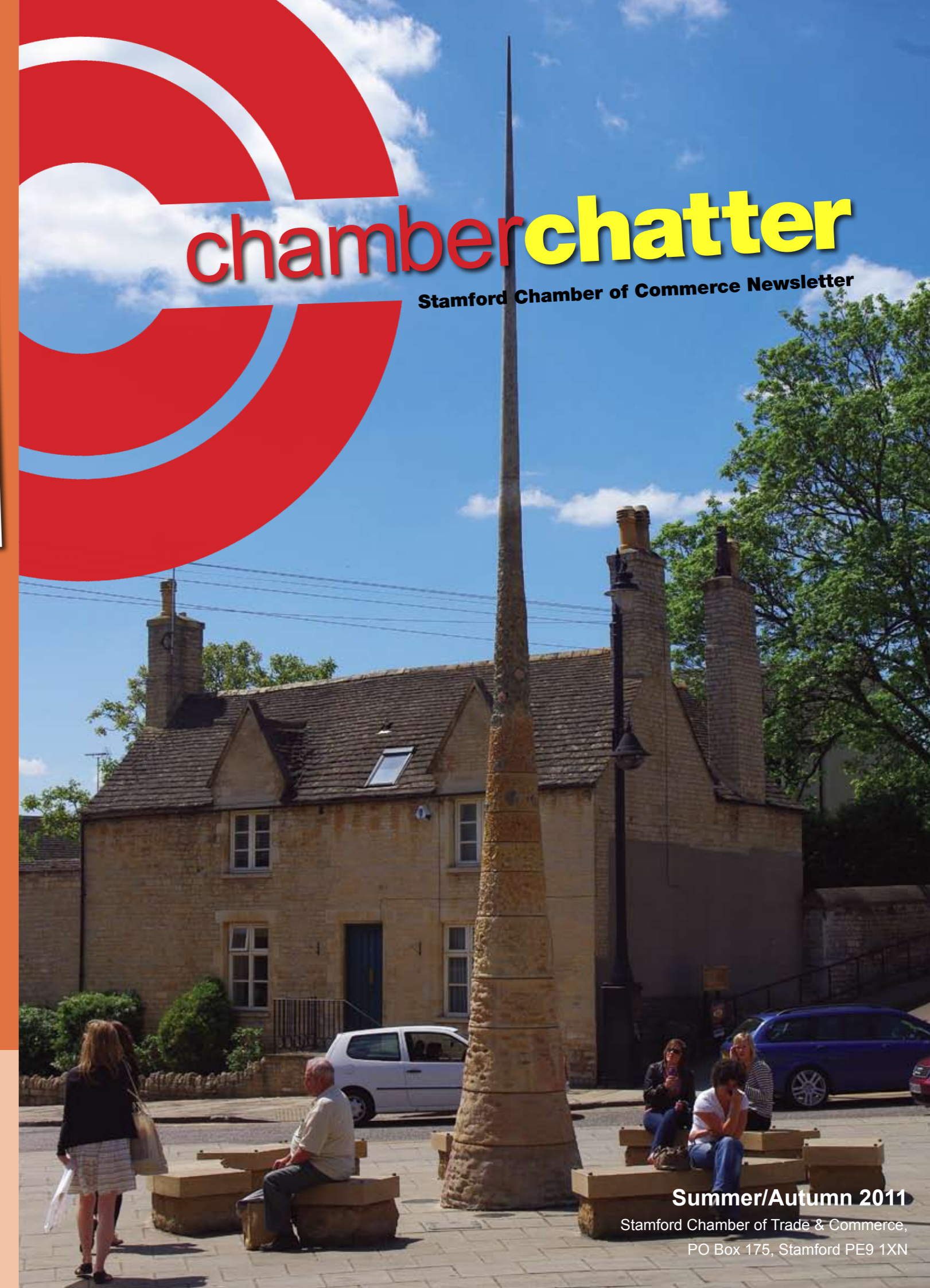
Stamford Independent Travel: sit@vgmail.co.uk

Harris McCormack: simon@harrismccormack.co.uk

Innerveation Chiropractic: dr.jch-hibbins@live.co.uk

Wythe Holland Partnership LLP:

john@wytheholland.co.uk



Summer/Autumn 2011

Stamford Chamber of Trade & Commerce,
PO Box 175, Stamford PE9 1XN

Chamber events

This summer we have enjoyed four varied events so far, the first of which being our AGM at The George Hotel on 18th May. 27 members attended and enjoyed drinks and canapés before the meeting started.

The President, Vice President and Treasurer all offered themselves for re-election, as did the existing members of the management committee. Jeremy Gibbs stepped down, due to relocation in London, and two new members were elected: John Dawson, representing Paul Richman and Roger Bradshaw, representing Sukie's Party Emporium.

In June, we visited Waitrose in West Street (this was a members-only event). Steve Hamm and his team gave us an interesting presentation about the logistics and issues around running a major grocery business and also provided excellent refreshments afterwards

July's get-together was the opening of the refurbished and upgraded William Cecil Hotel.

This evening was shared with other special invitees of the hotel and the official opening ceremony was led by Miranda Rock. Many of

Steve Hamm, Retail Manager at Waitrose

Stamford's great and good were there to enjoy champagne and canapés and to view the re-modelled facilities and guest rooms.



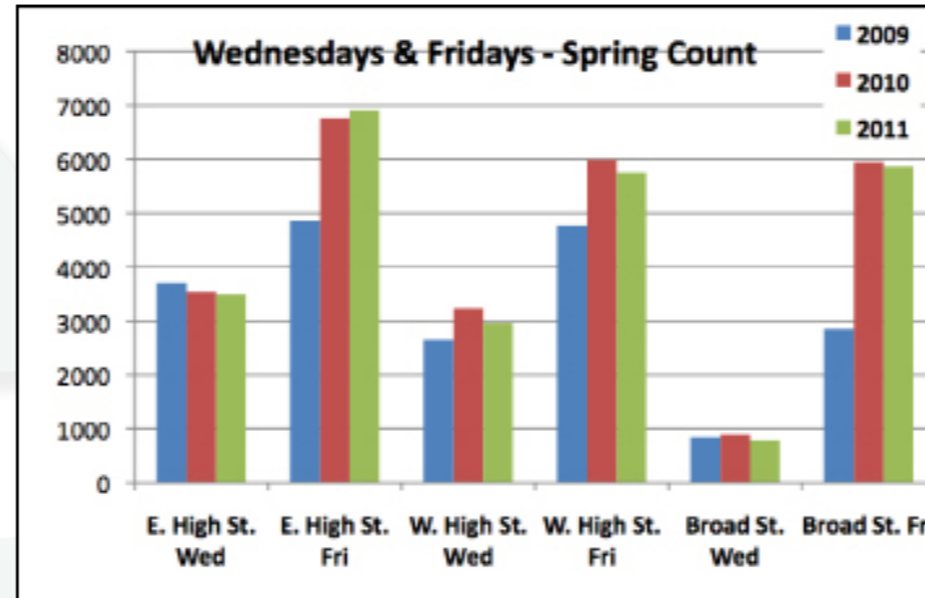
The Mayor of Stamford outside the Hotel, surrounded by Chamber members!

Another frenetic Speed Networking session was organised in September, taking advantage of the William Cecil's new meeting room facilities. Attendees enjoyed some delicate finger food before plunging into the main business of the evening:

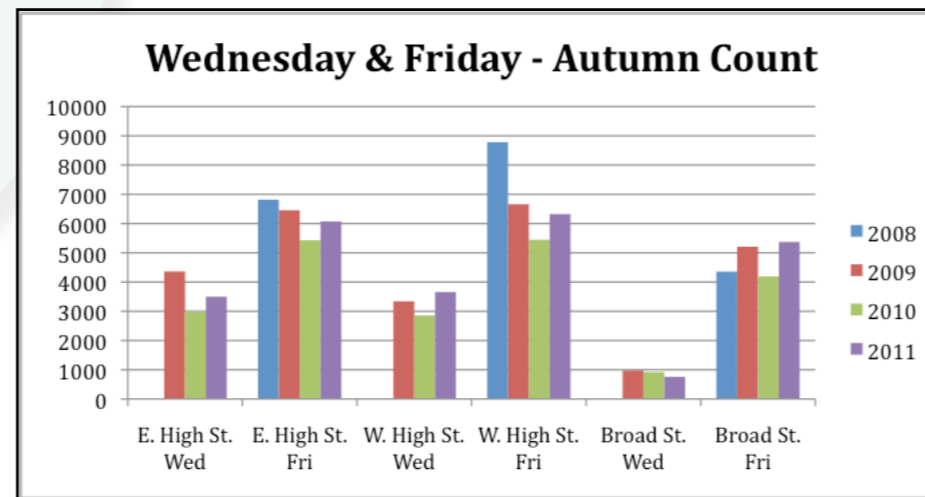


Footfall in Stamford

Since the last Newsletter we have carried out two more footfall counting programmes in Stamford. We measure passers-by at 7 locations in the town over a three-hour period. The counts are collated and presented in a series of ongoing charts that show progress over time.



Taking the 3 busiest locations, the chart to the left shows that in the Spring, footfall on Fridays has remained more or less constant over the last 2 years (2009 is not typical, as it rained all day on our Friday count!)



Turning to the Autumn count (see left), Friday in 2011 was better than 2010 and similar to 2009. The 2008 count was conducted a month earlier (in August) so is not directly comparable as schools were still on holiday and more tourists would also have been around.

What's the conclusion of all this? It seems that Stamford's town centre is still a popular location, particularly on Fridays. Similar counts conducted in Grantham and available to view on SKDC's website show a long-term decline in most count locations.

We will publish a full tracking chart of all our in-town count locations in the next edition of Chamber Chatter.

The Artists in Red Lion Square



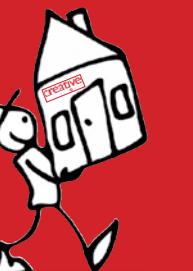
The artists are continuing to enjoy their Friday exhibitions and now are fully self-financing. The President dropped by recently to visit Allan Grey, the main organiser (see Tim below wearing new Panama hat acquired in Ecuador!). During our meeting, Allan produced this stunning picture (below) of the Red Arrows flying over Stamford, snapped from the upstairs window of Central Café. Very Impressive, a shot in a million!



Sadly, a bit too impressive. We are sure some readers will have spotted the error – this picture shows at least 17 Red Arrows, when anybody will tell you that they only fly in a formation of 9 (the Diamond)..... Yes it's amazing what you can do on Foto-Shop! Thanks Allan, but stick to the real world in RLS, please!

creative are moving!

DESIGN & PRINT



From the 10th October Creative Design & Print will be trading from their new premises:

Unit 1, Gas Street, Stamford
01780 756166

fiona@creative-design-print.co.uk
www.creative-design-print.co.uk

We look forward to supplying existing clients and welcoming new customers

FOR ALL YOUR DESIGN & PRINT NEEDS

- Corporate Identity
- Business Stationery
- Brochures
- Large Posters
- Flyers
- Vouchers
- Wedding Stationery
- Short print runs
- Invitations
- Postcards
- Repro work
- Websites